

To Grow // Akin

Early Years Reference Design // in-house // May 2018



in-house





Chapter 01

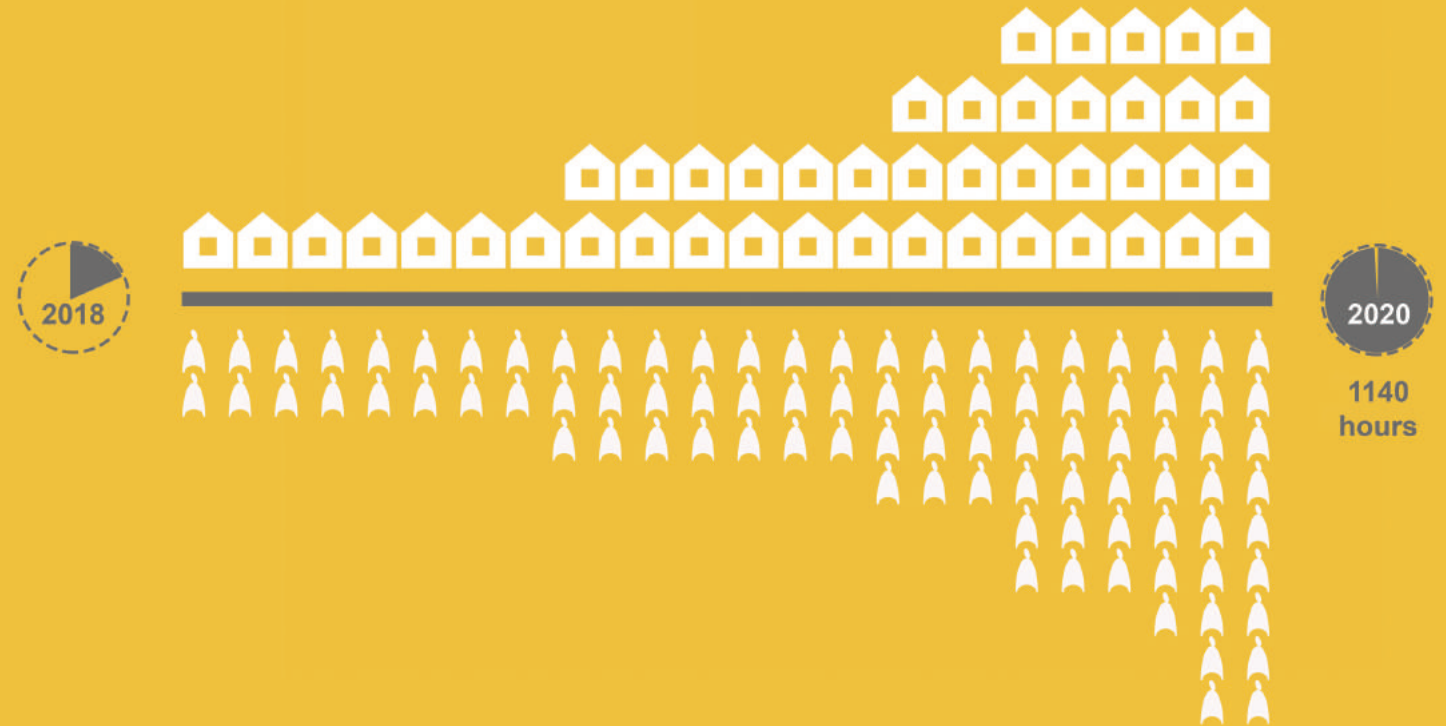
The Bigger Picture

Changes



"The early years are so crucial in shaping Scotland's next generation. The significant expansion of funded early learning and childcare gives us the perfect opportunity to define the type of experience we want to offer our children during their early years..."

Maree Todd MSP Minister for Childcare and Early Years



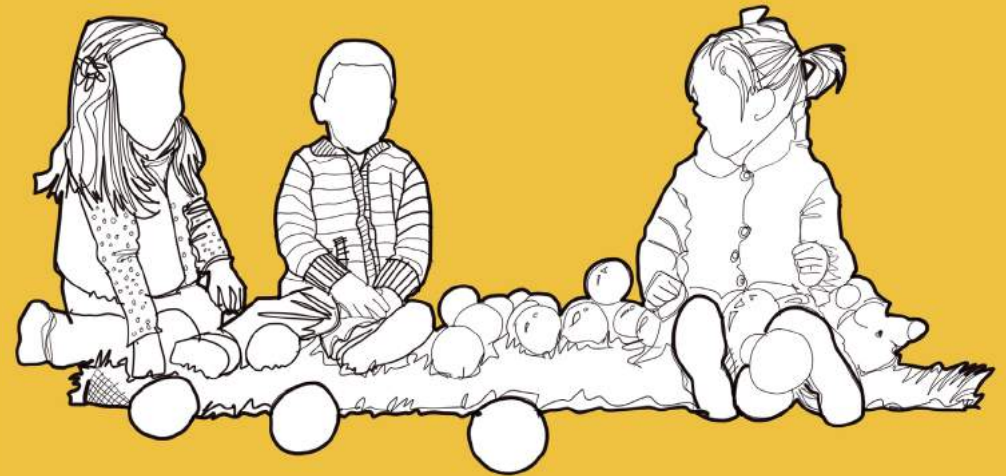
Collaboration



Best Start

“For the best start in life and making Scotland the best place in the world to grow up”

Space to Grow



Best Future

“To help children and young people gain the knowledge, skills and attributes needed for life in the 21st century..”

Education Scotland



Chapter 02

Akin- Context / Components

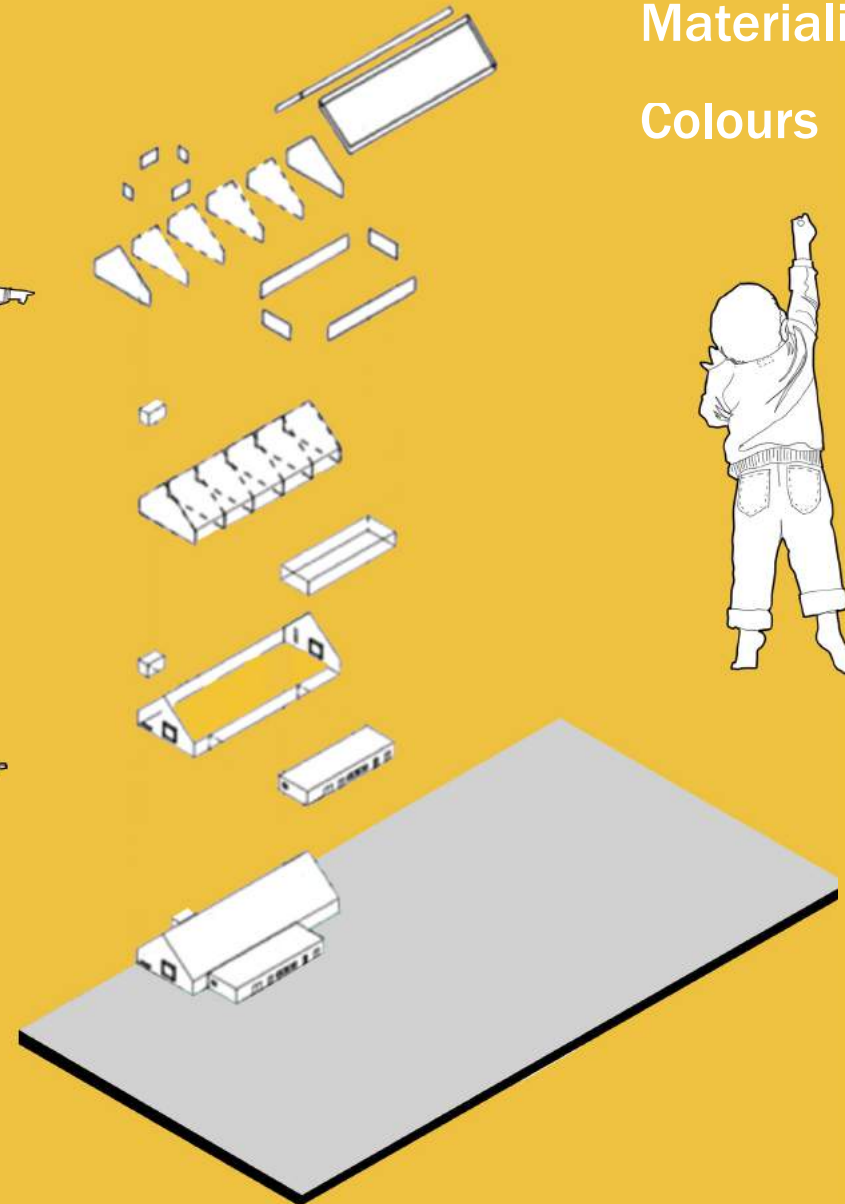
To Grow - Akin

Choice + Identity

Scale

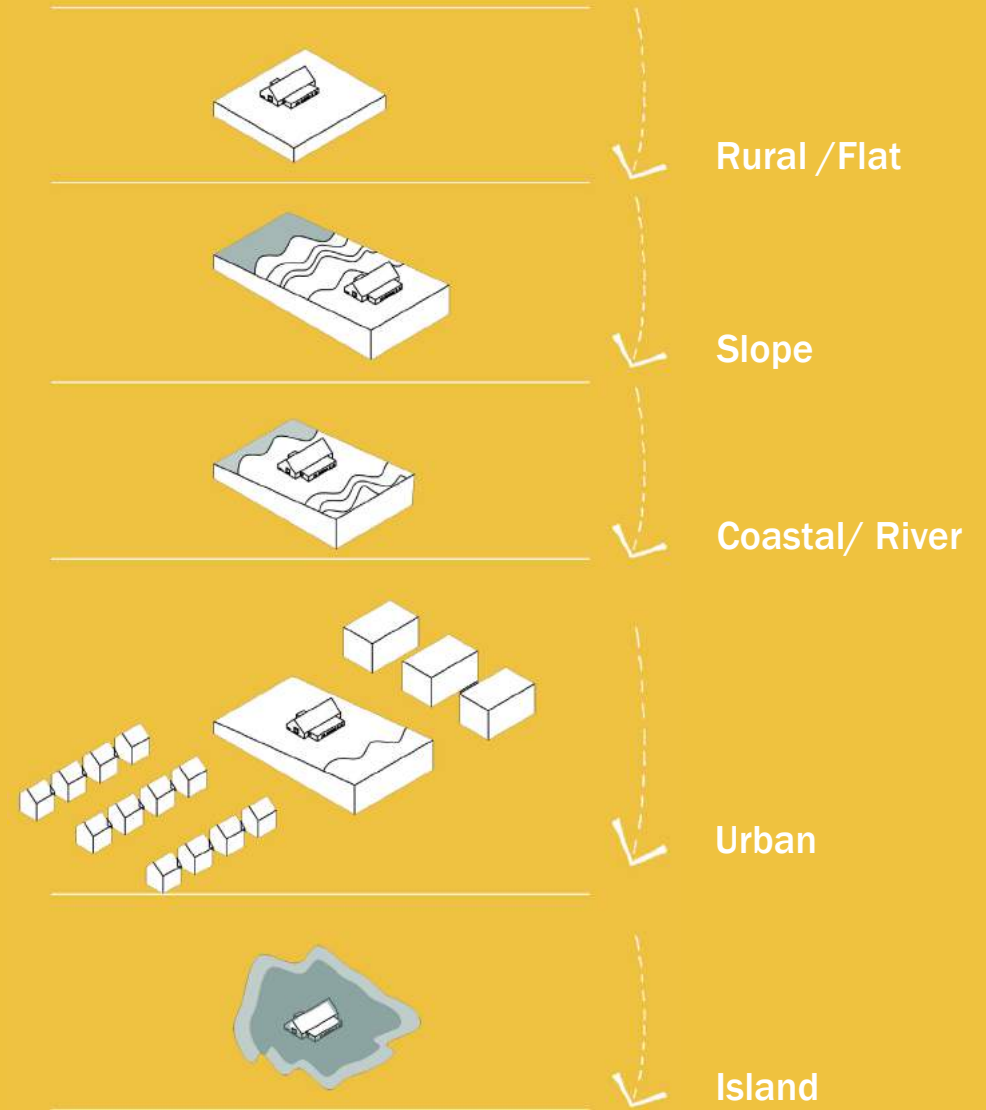
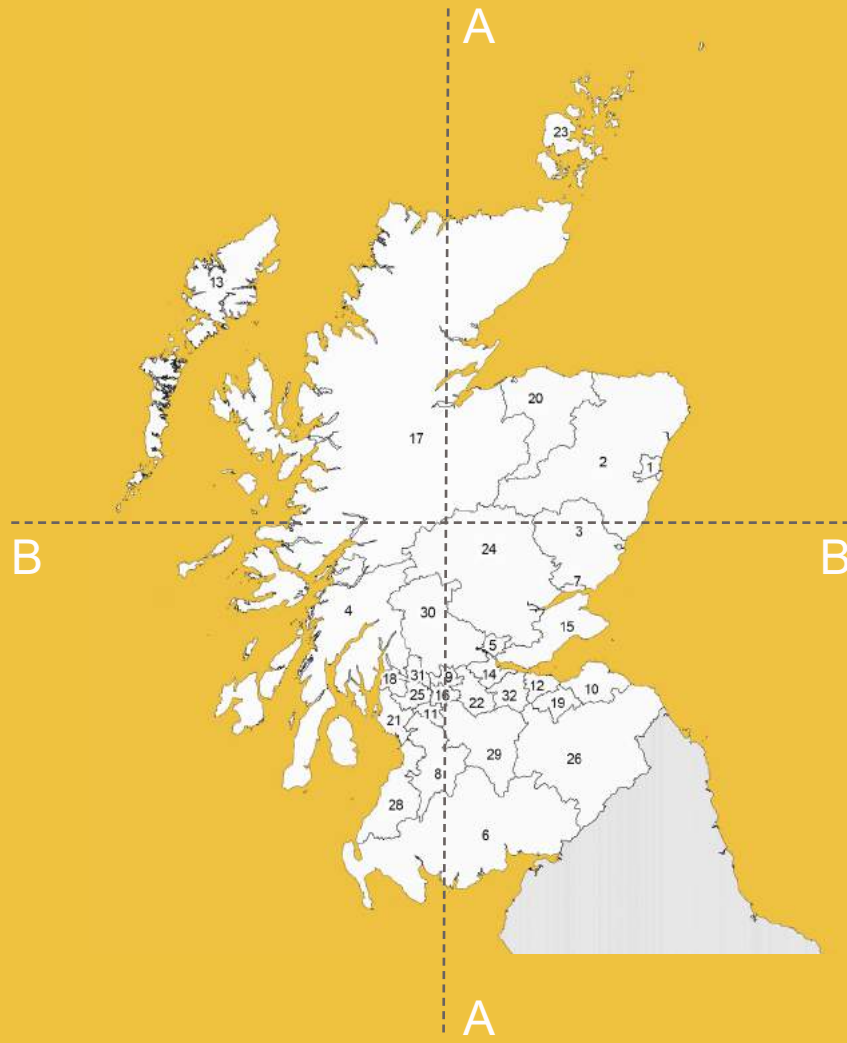
Materiality

Colours



Context

Changing Landscapes

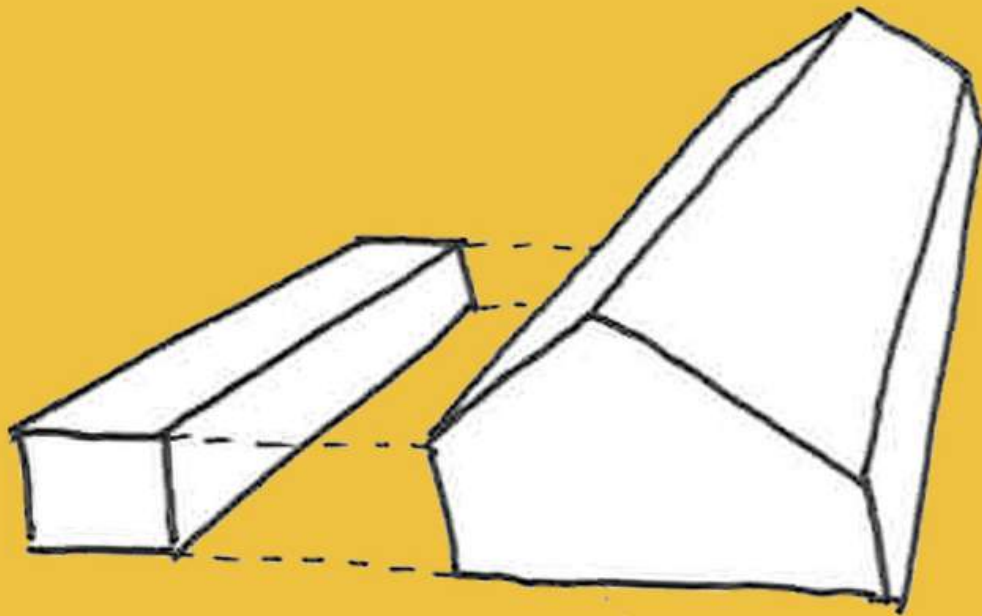




Chapter 03

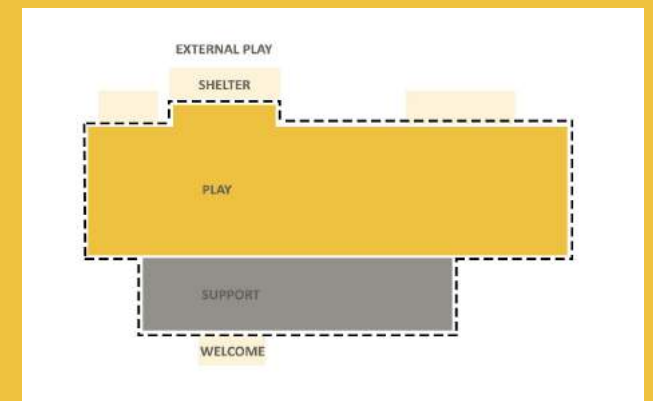
Reference Design

Diagram

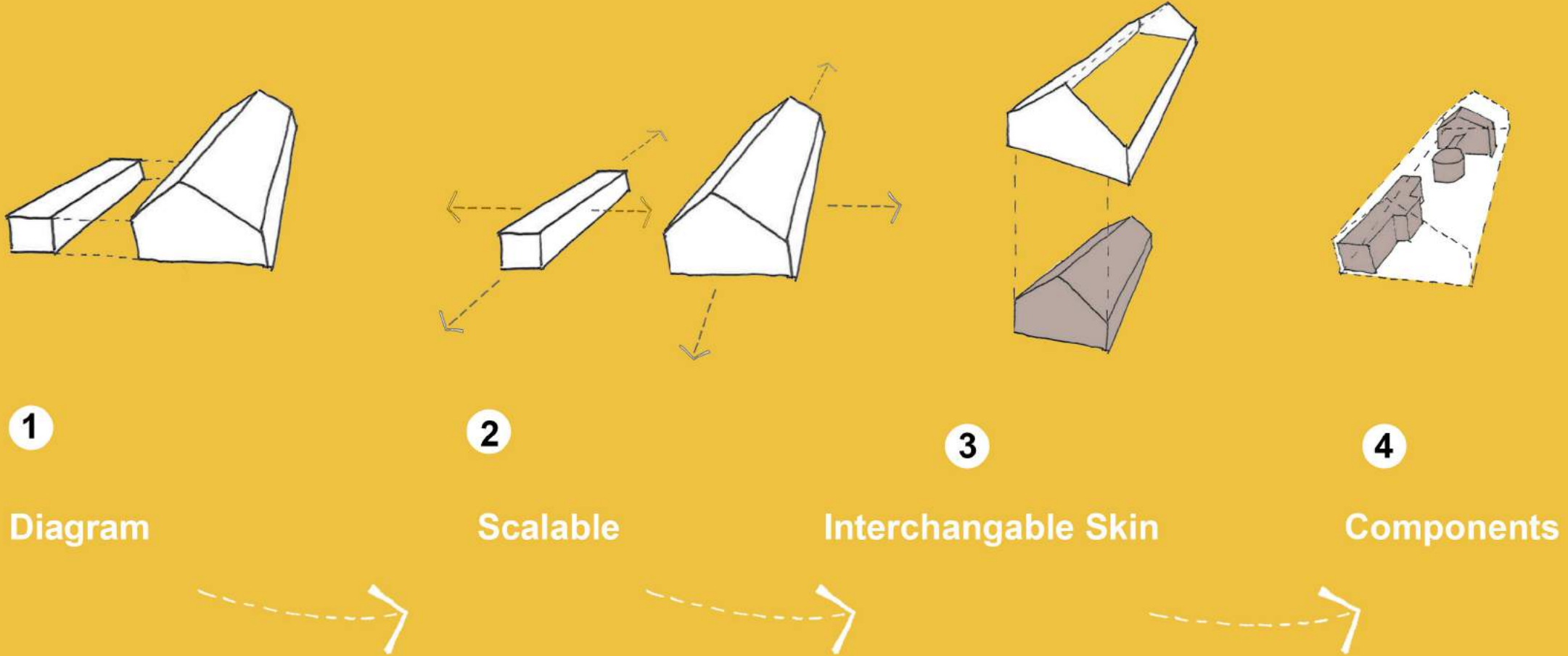


SERVICE ZONES

PLAY ZONES



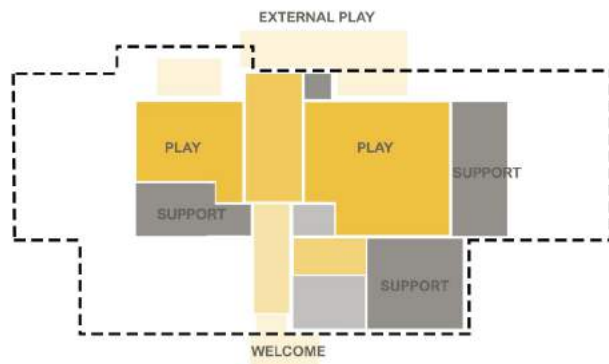
Concept



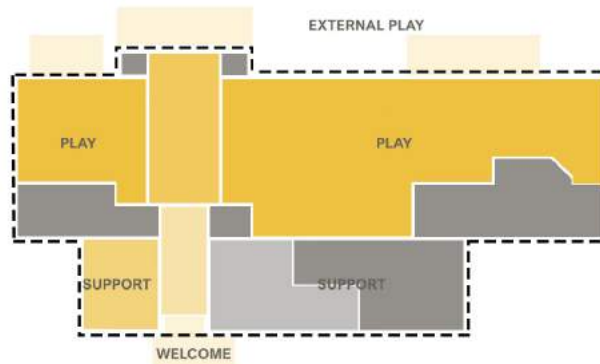


To Grow

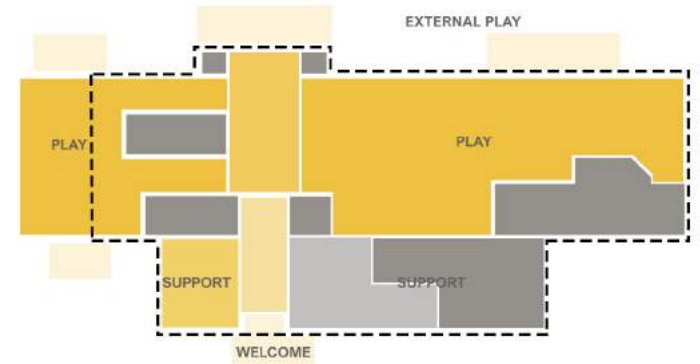
Small Example 3-5 Model



Reference 2-5 Model

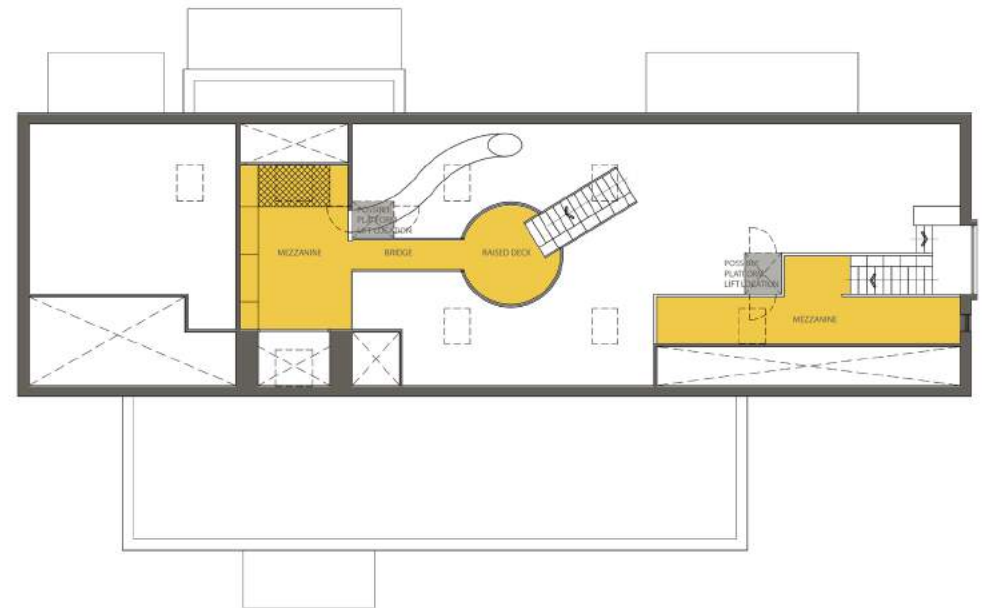


Large Example 0-5 Model



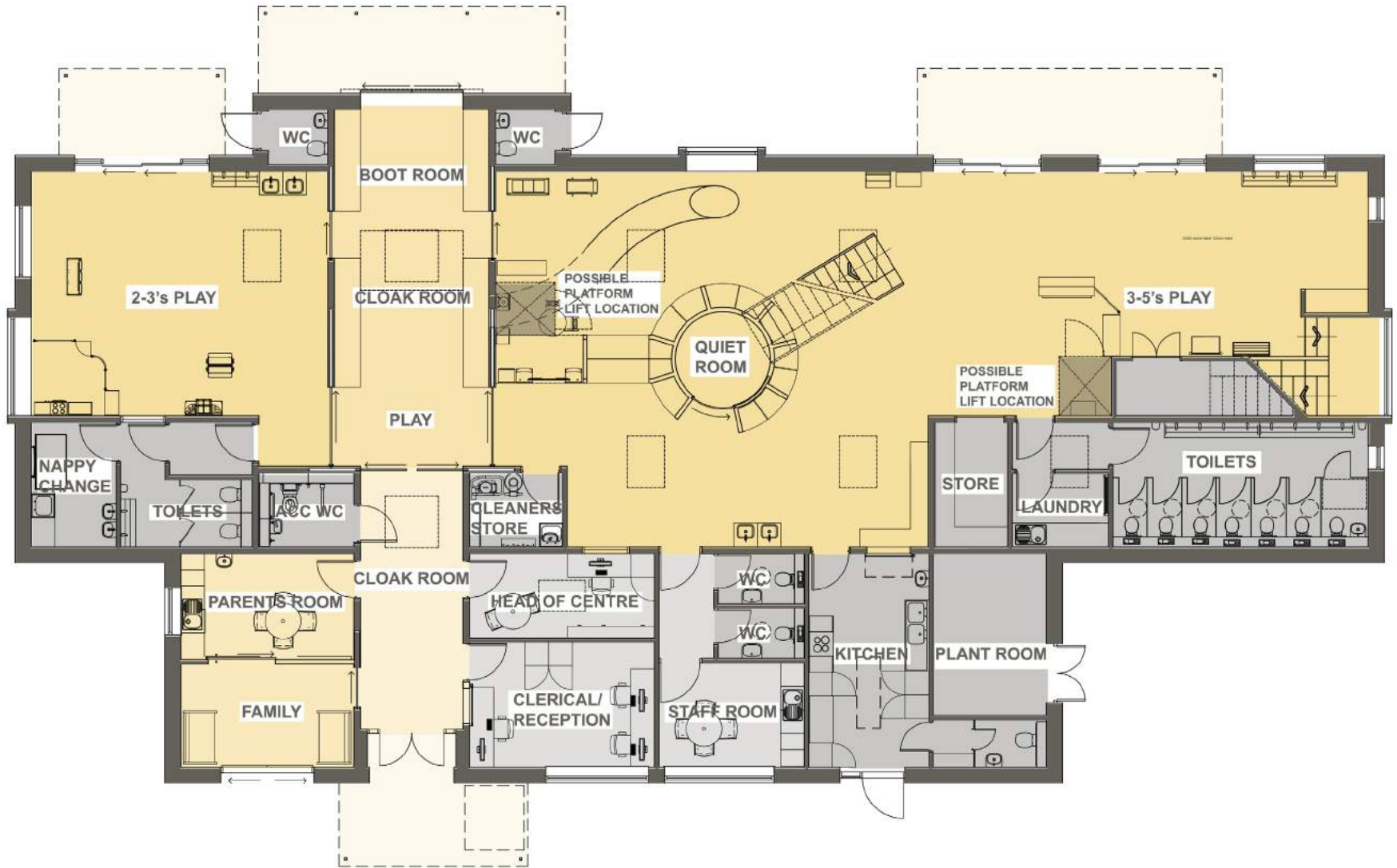
Plans

Building Organisation



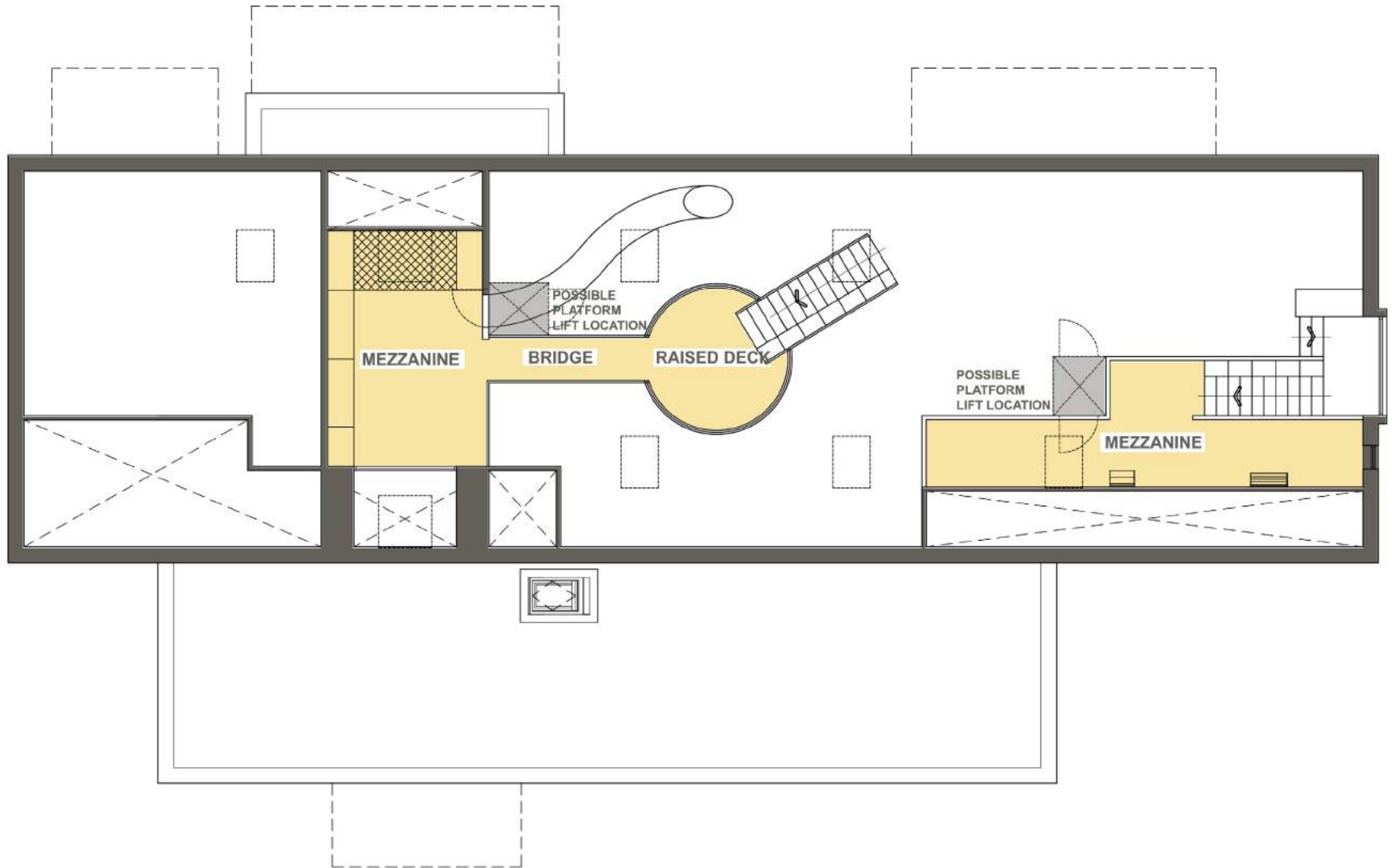
Plans

Ground Floor Plan

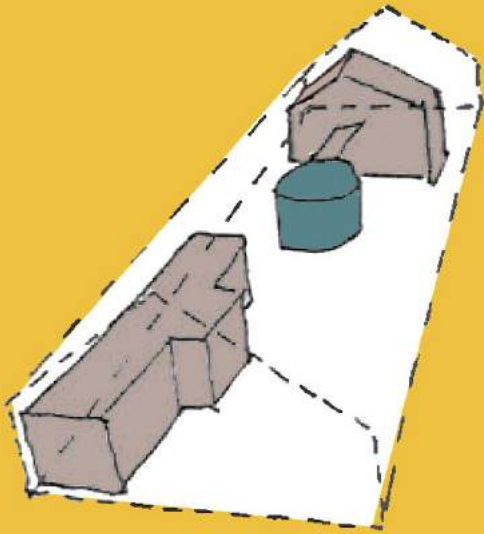


Plan

First Floor Plan



Components



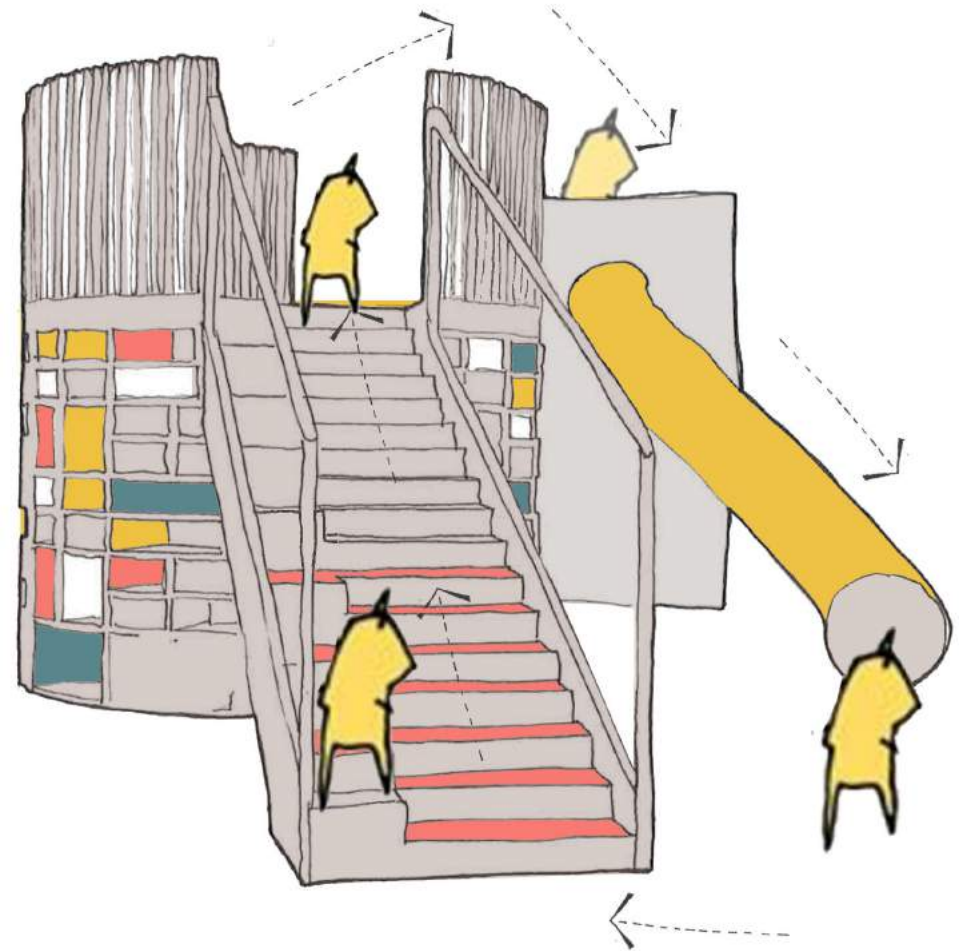
Retreat

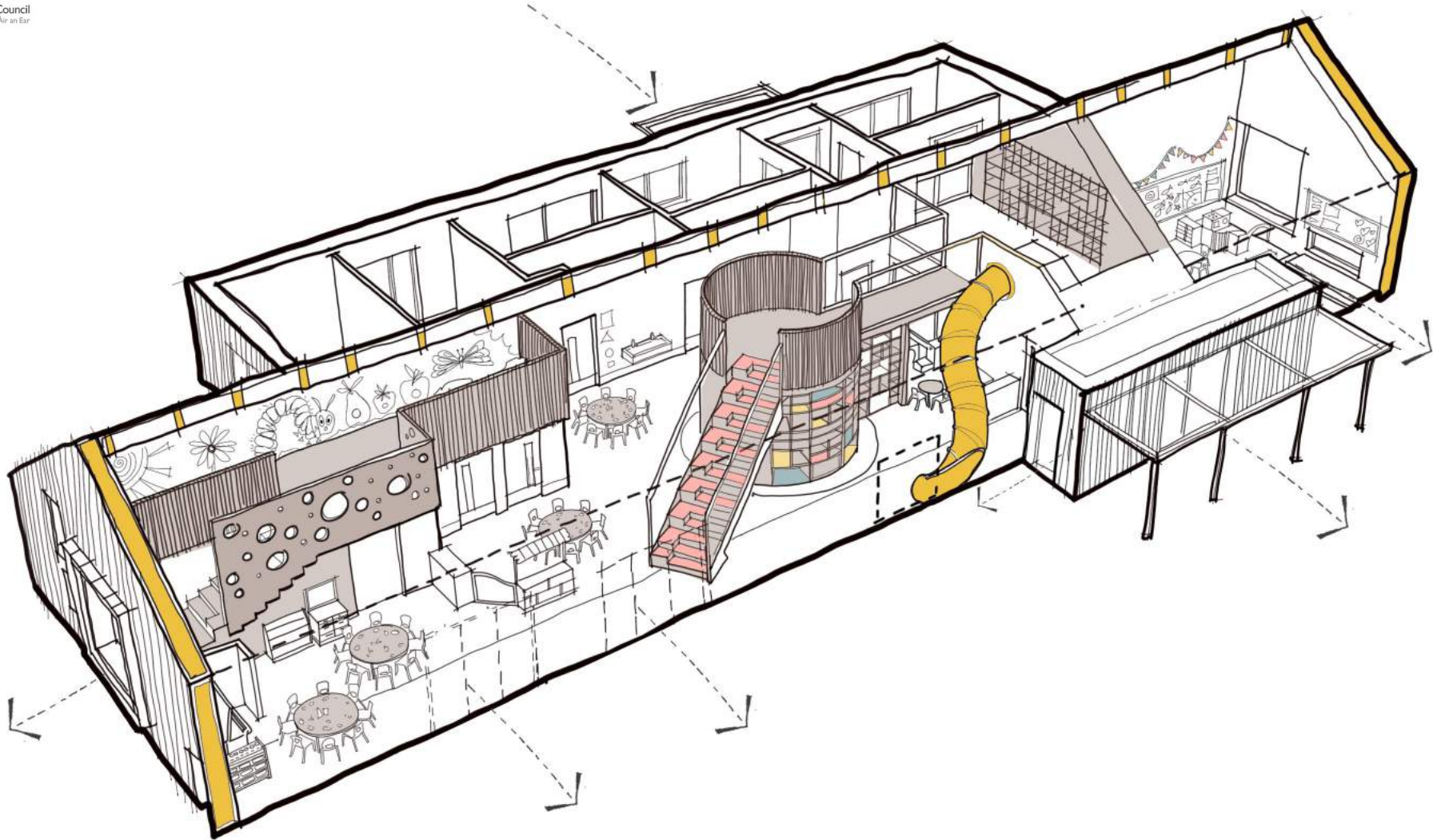
Store

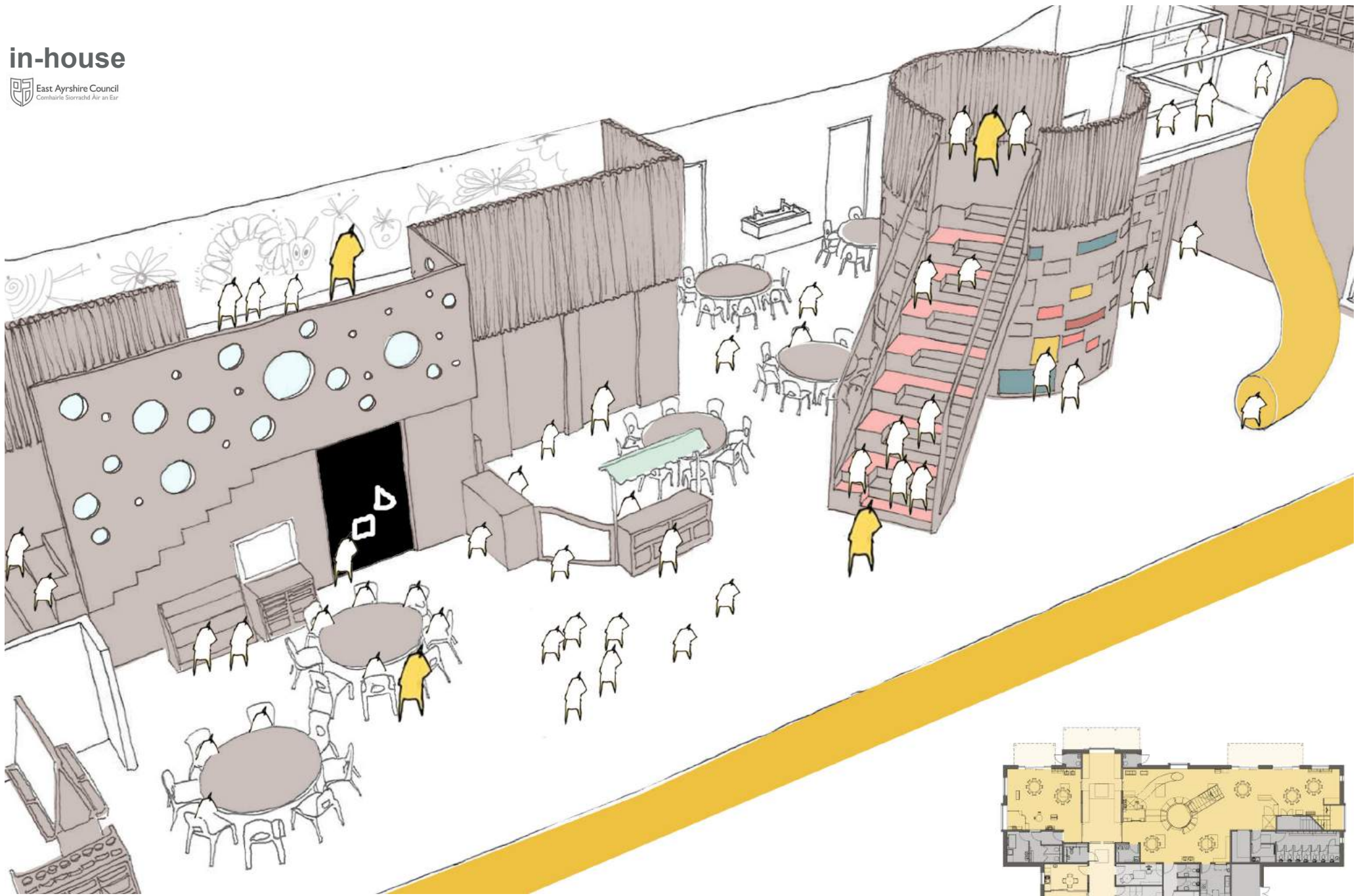
Climb

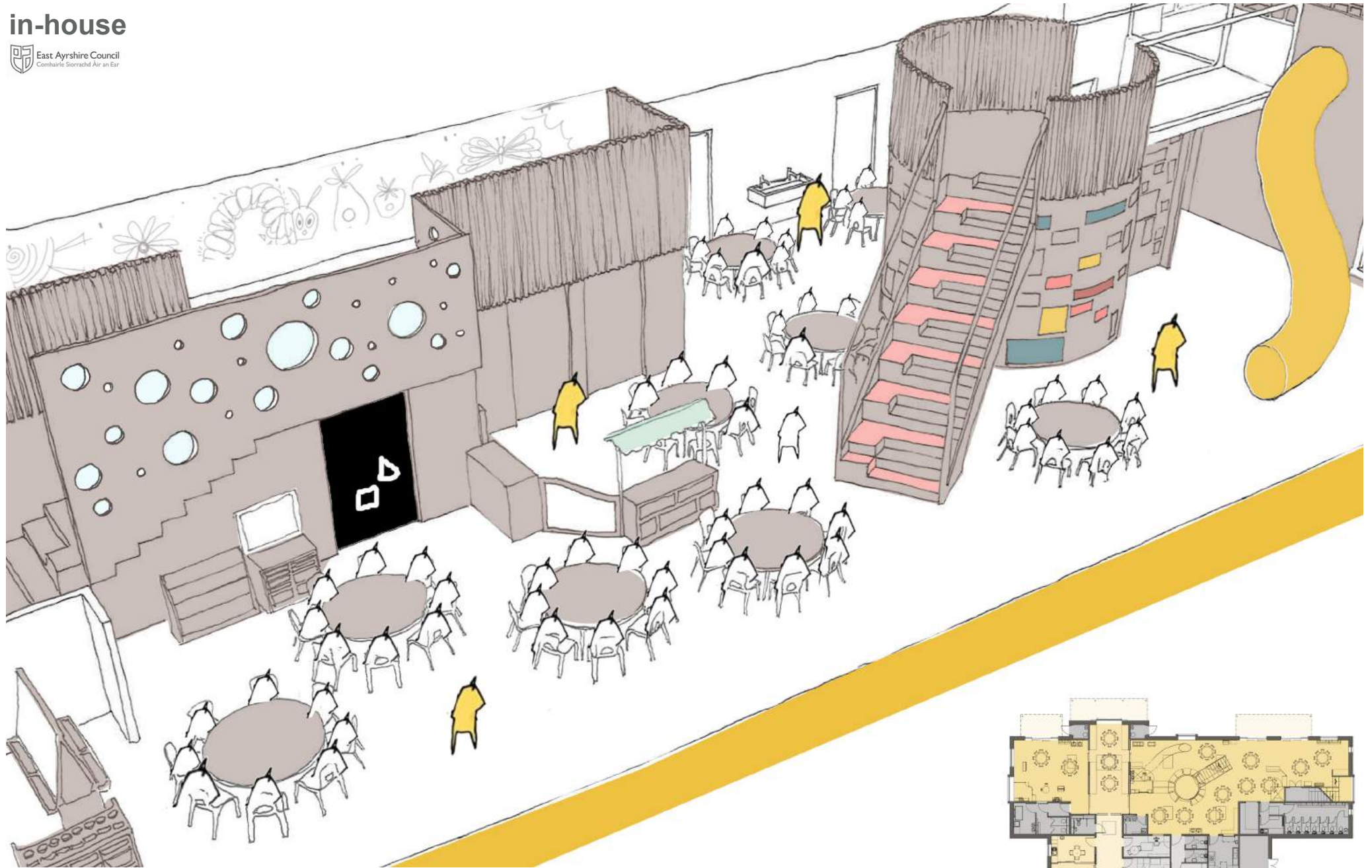
Slide

Gather





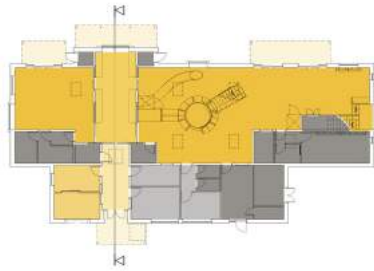
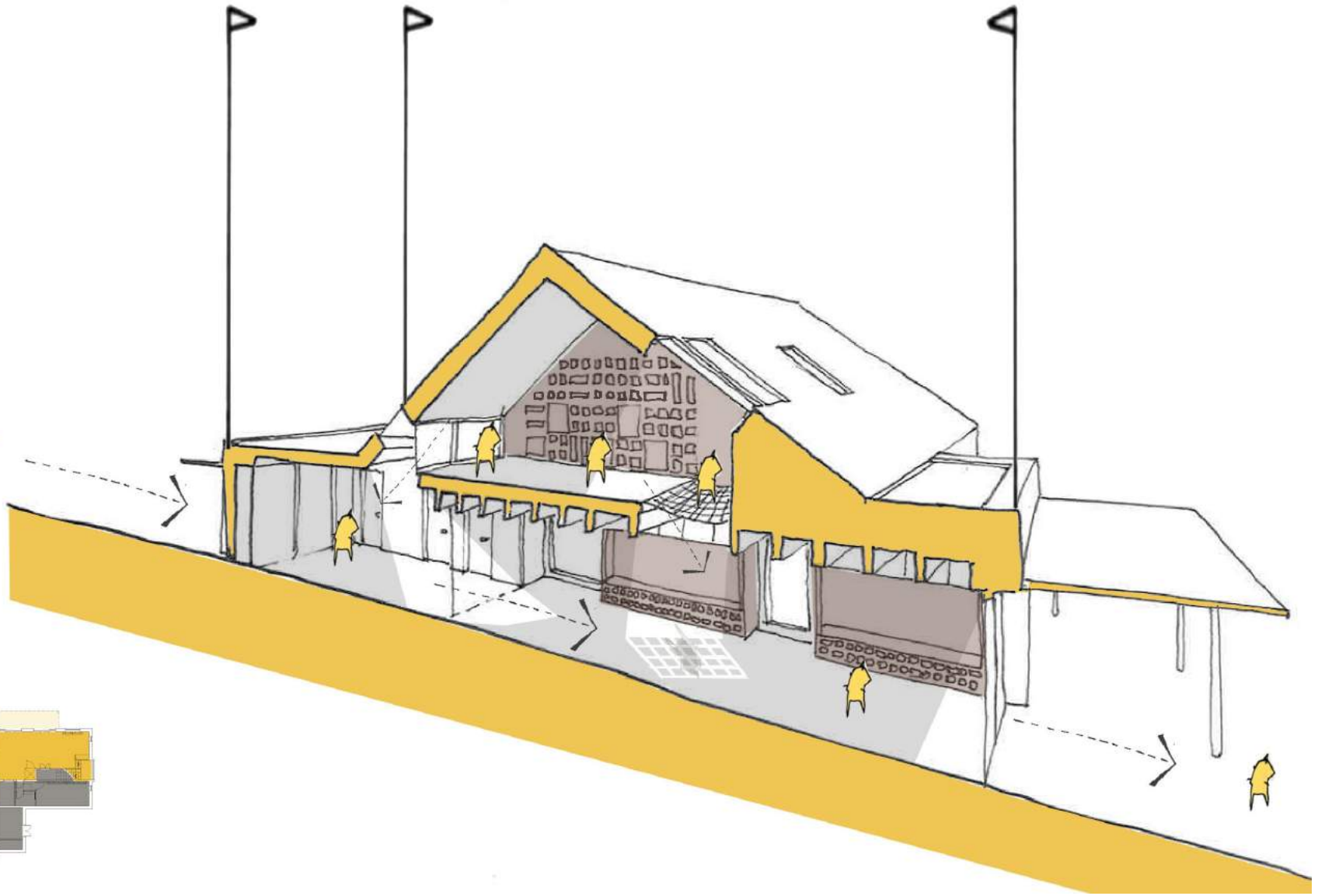
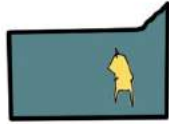


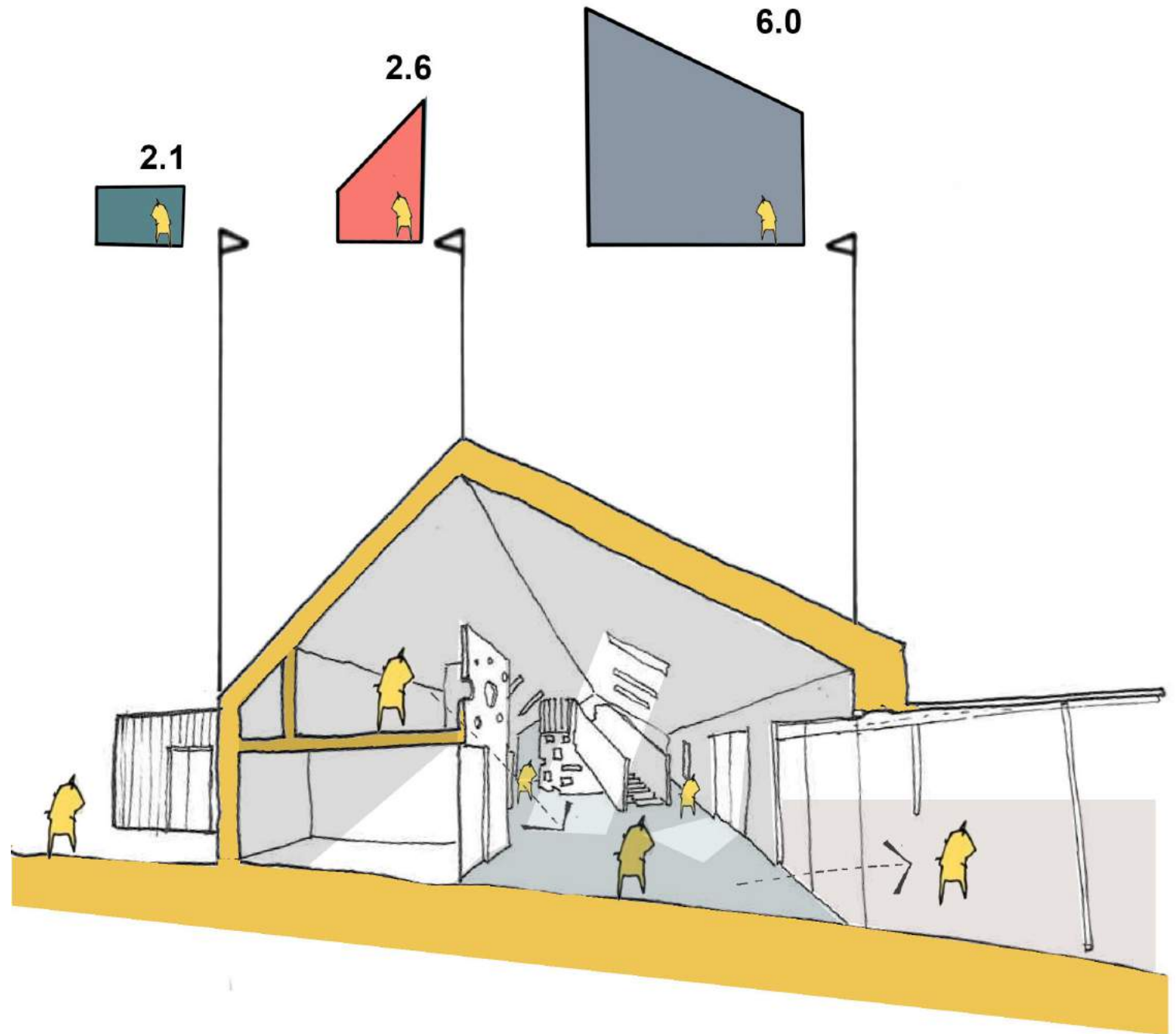
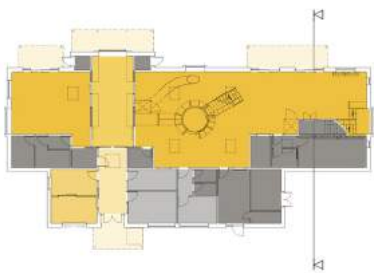


2.4

2.6

2.1



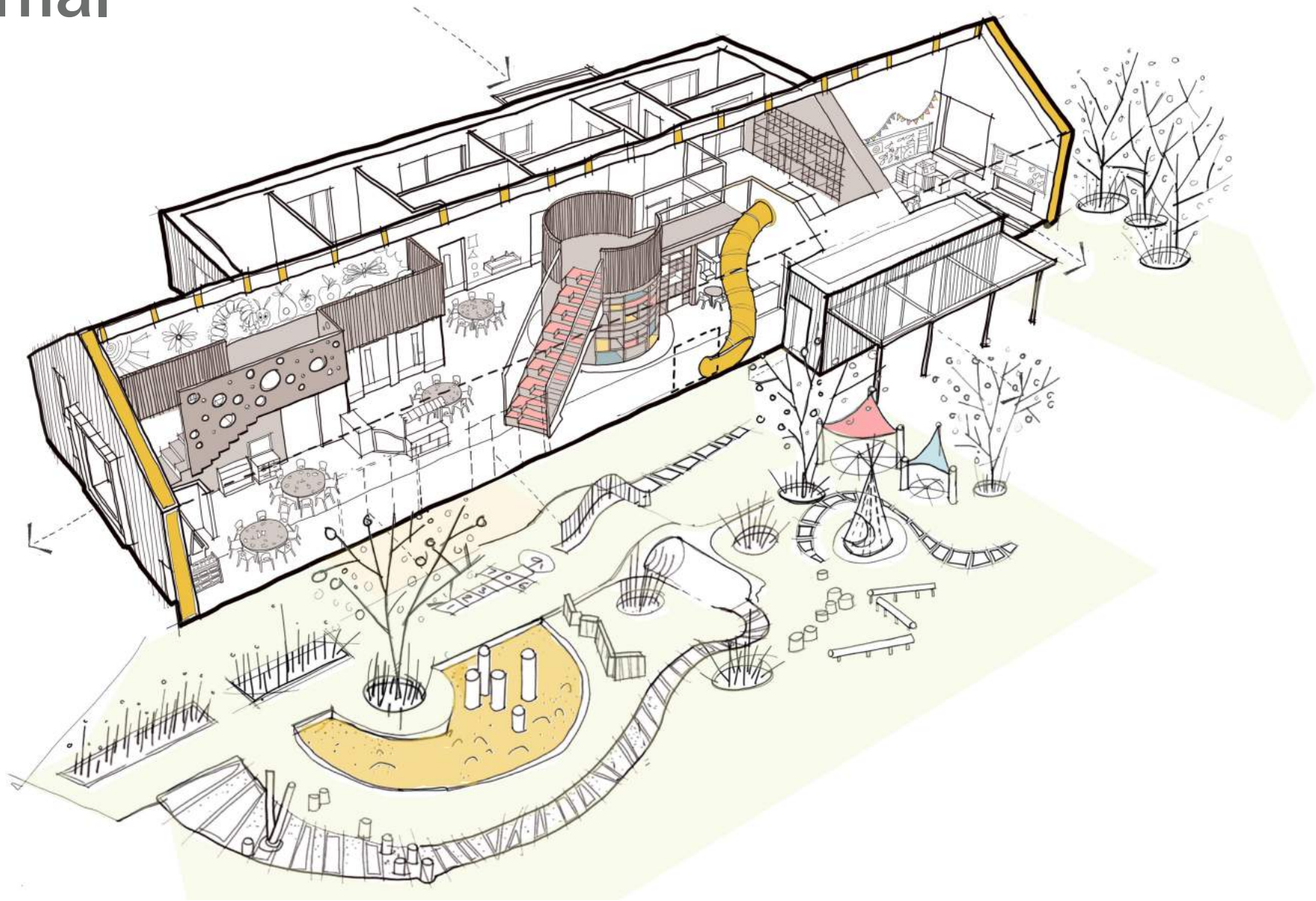






External

To Explore



External

To Explore



TO GROW



NATURAL LOGS



CYCLING



MUD KITCHEN



WATER SAND PLAY



Early Years // Reference Design // In-house

in-house





Early Years // Reference Design // In-house

in-house





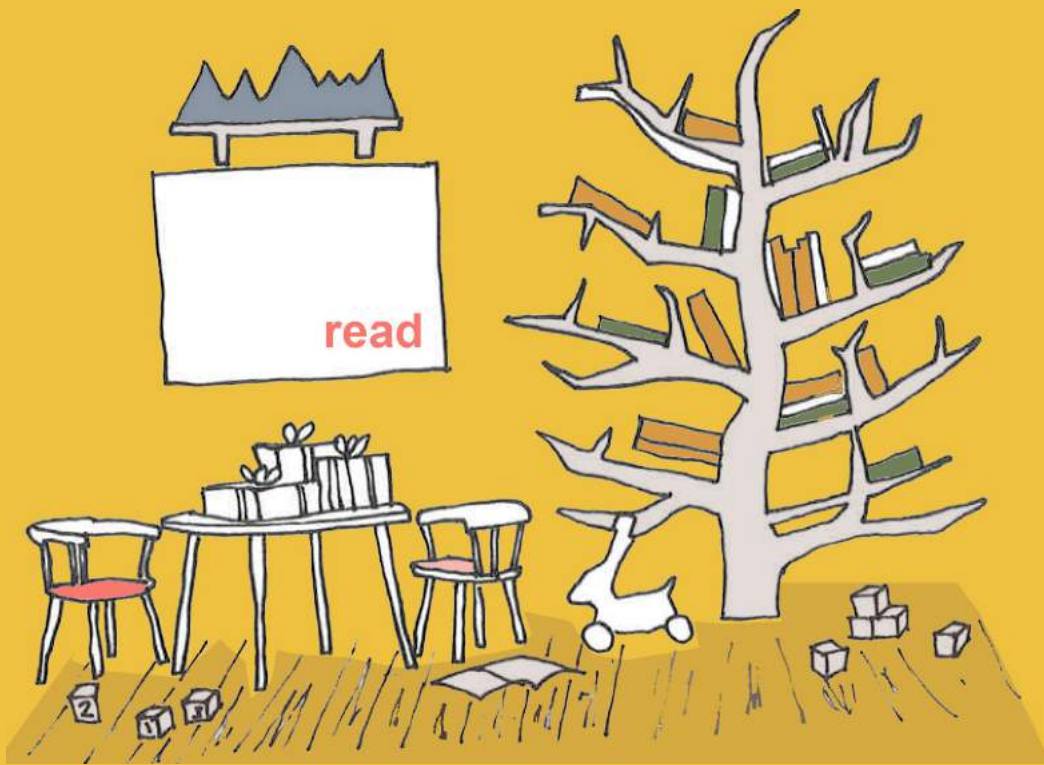
Early Years // Reference Design // In-house

in-house



Chapter 04

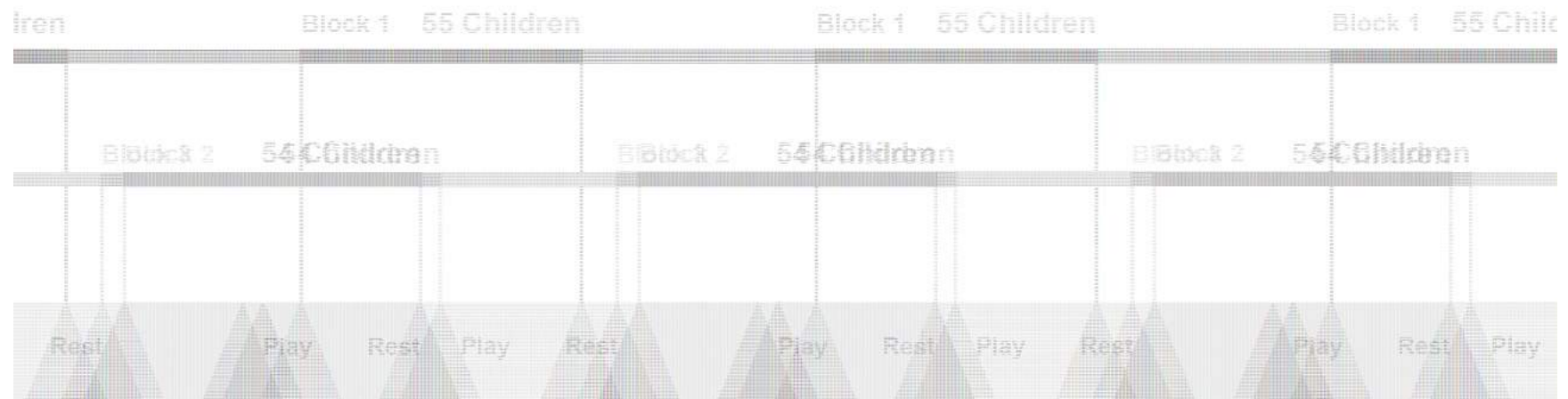
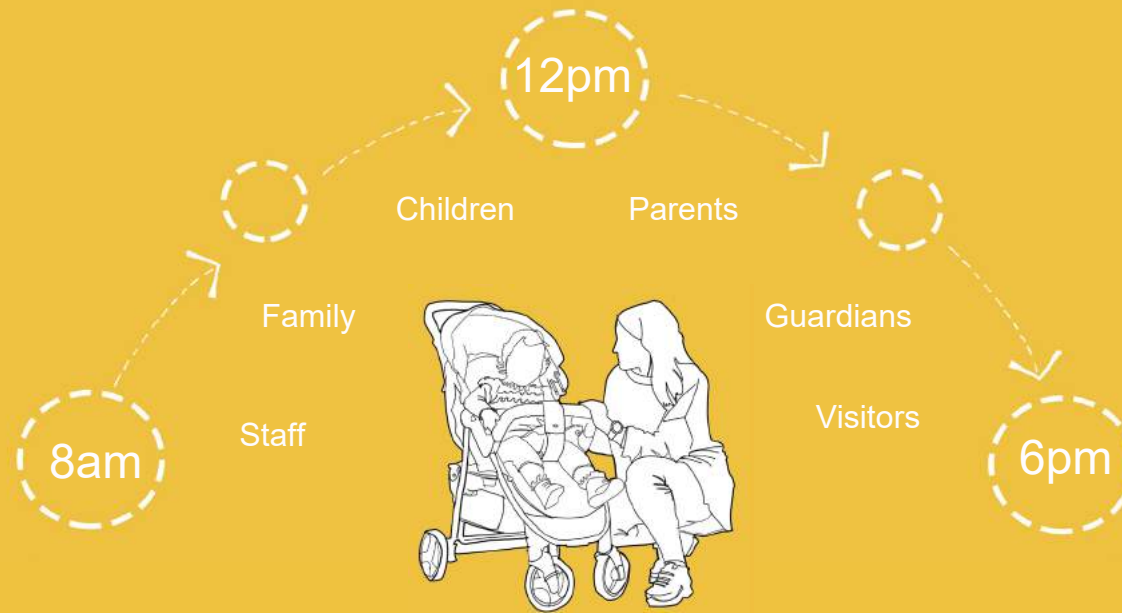
A day in the life



Journey

Key Changes:

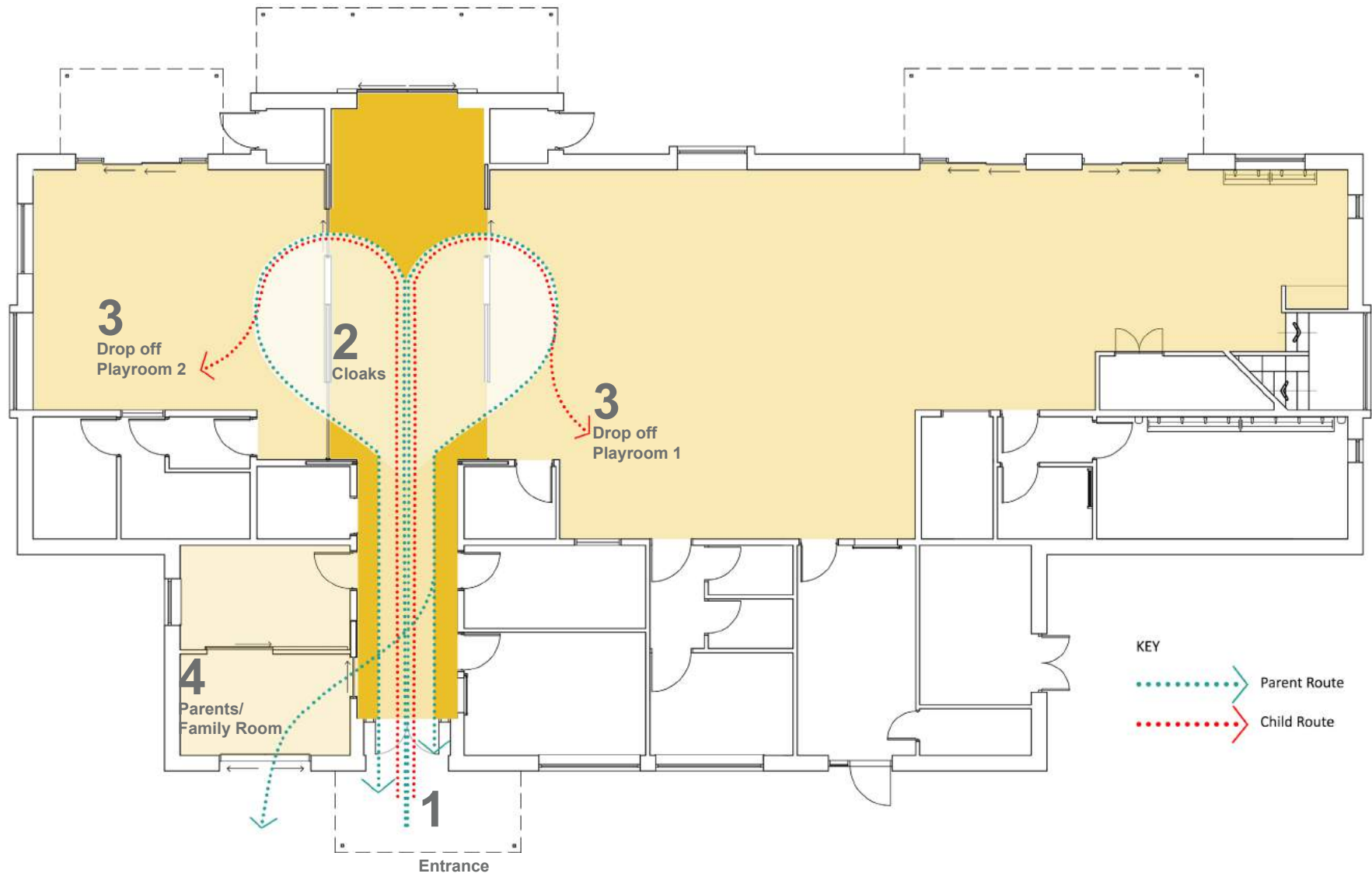
- More Transition
- Opportunity for Rest
- Dining
- Longer Days





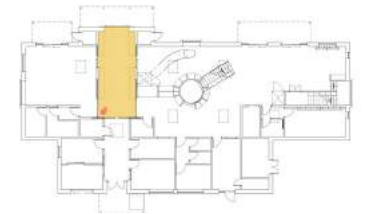
Arrival: 8am - 9am / 1:15pm





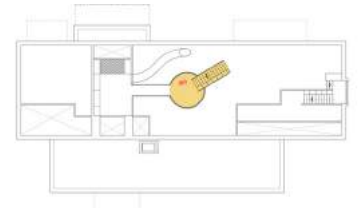


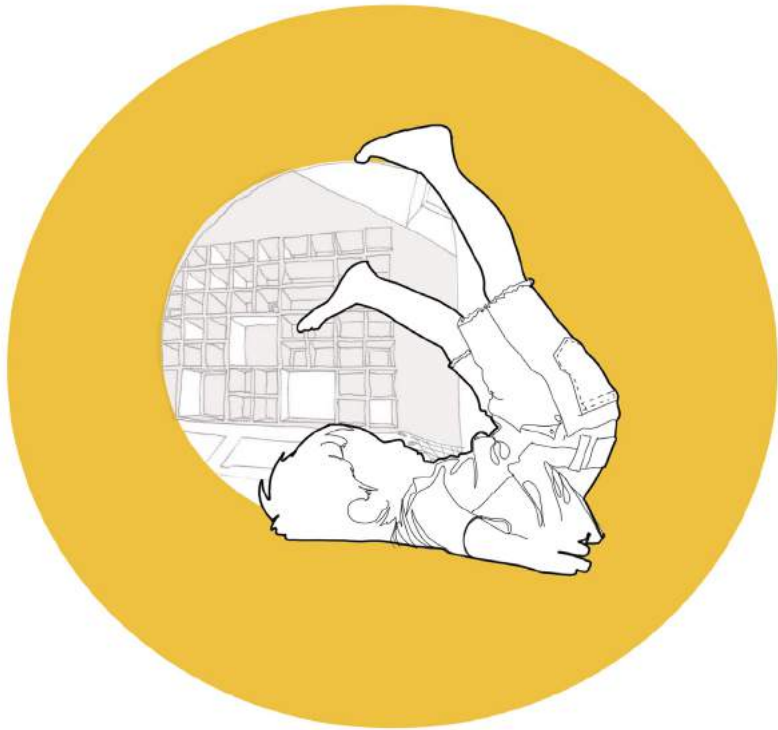
Arrival / Cloaks: 8am -9am / 1:15pm



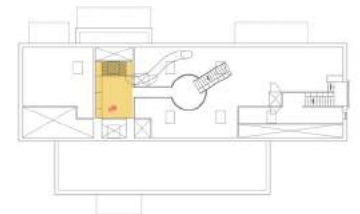


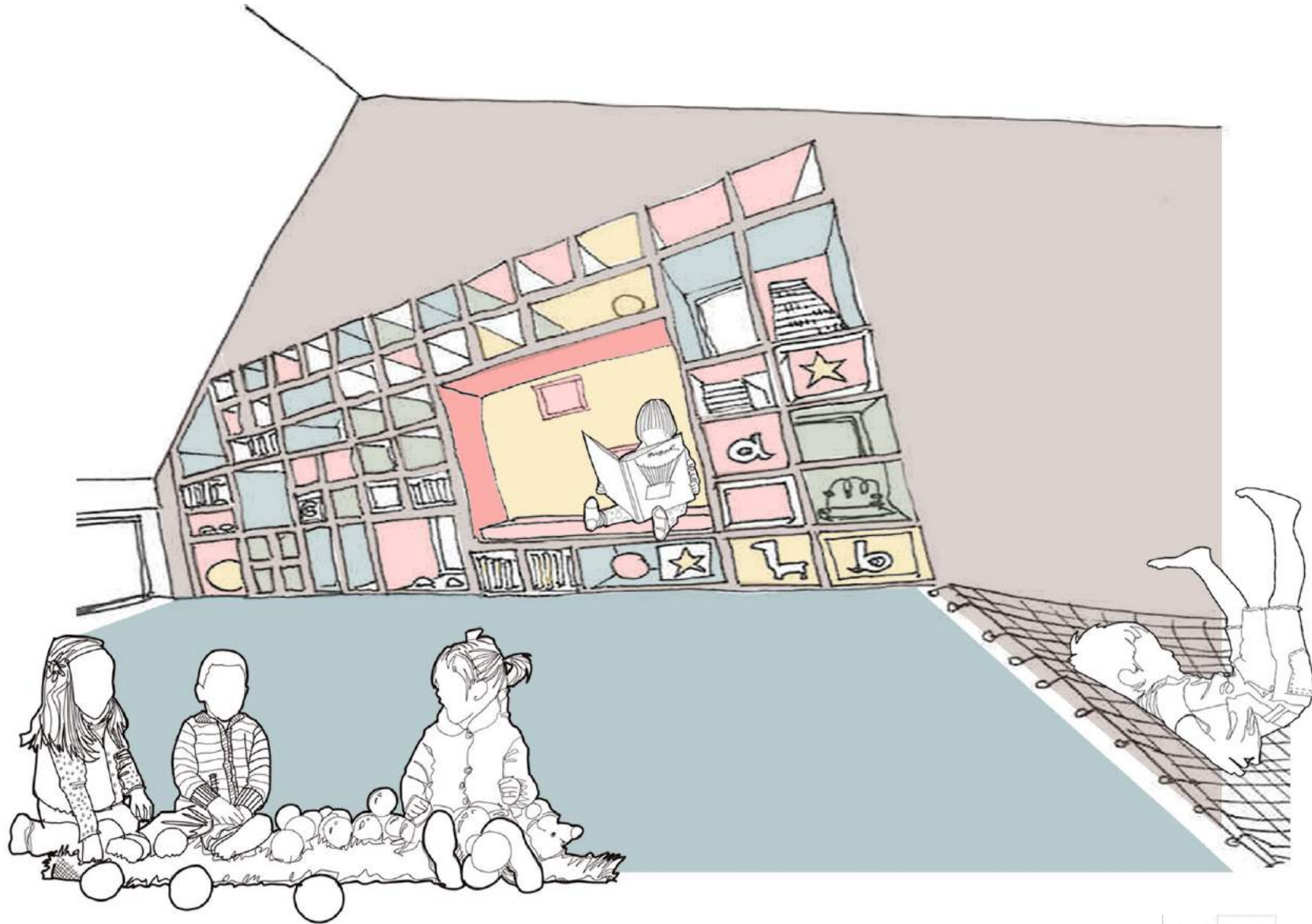
Play: 10am Indoors



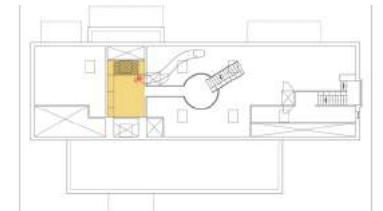


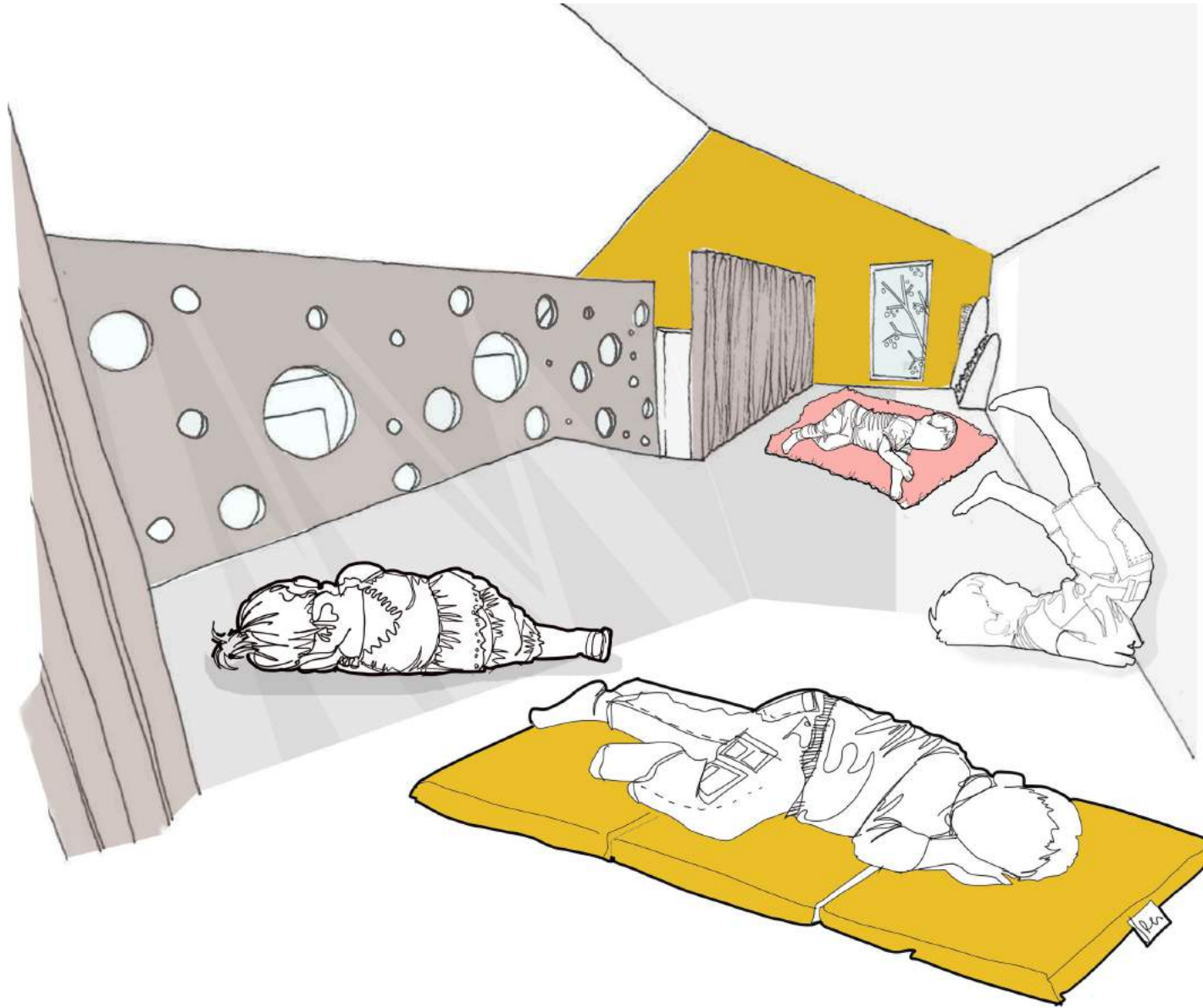
Play: 11am Indoors



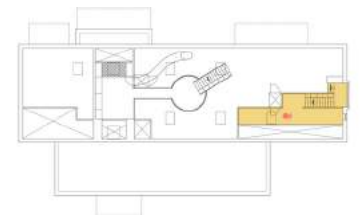


Play: 11am Indoors





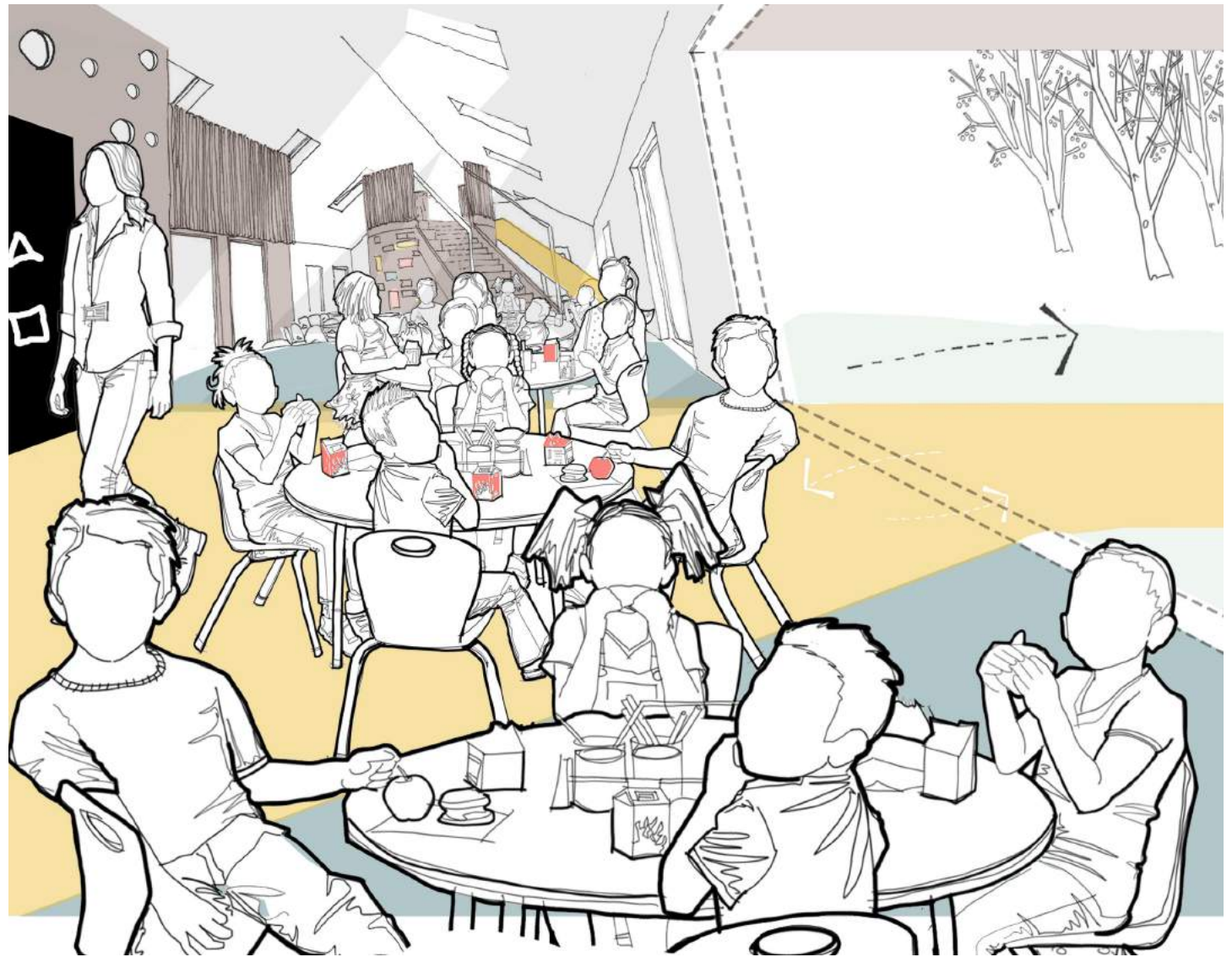
Sleep: 11am Indoors





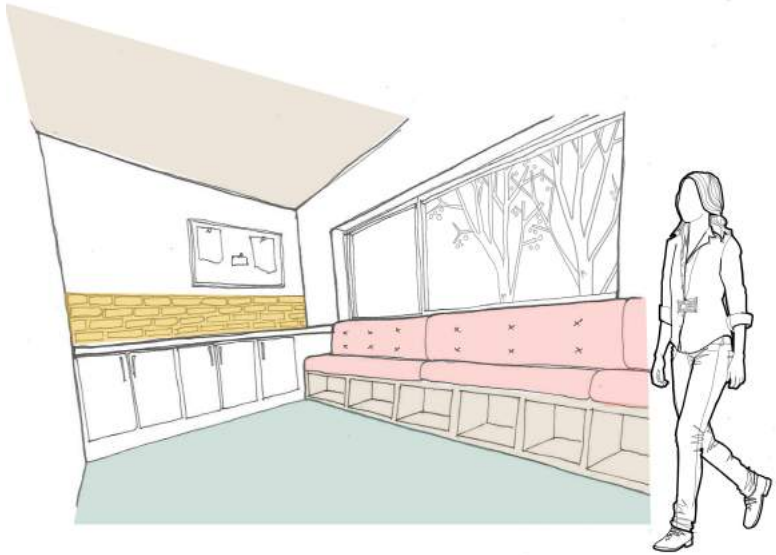
Play: 11am Indoors





Play: 12pm Lunch





Staff Room



Parent/ Family Room

Staff Break Admin: 2.30pm



Early Years // Reference Design // In-house





Play: 6pm Pick Up/Out of Hours





Early
Years
Centre

To Grow // Akin

Thank You